

Customer :

customer

Customer part :

customer part

Comment :

Comment

S1=0.73

S2=12.47

Tmax=440

Tp S2=479.0

PI=0.06

HI=246

Sample =9107

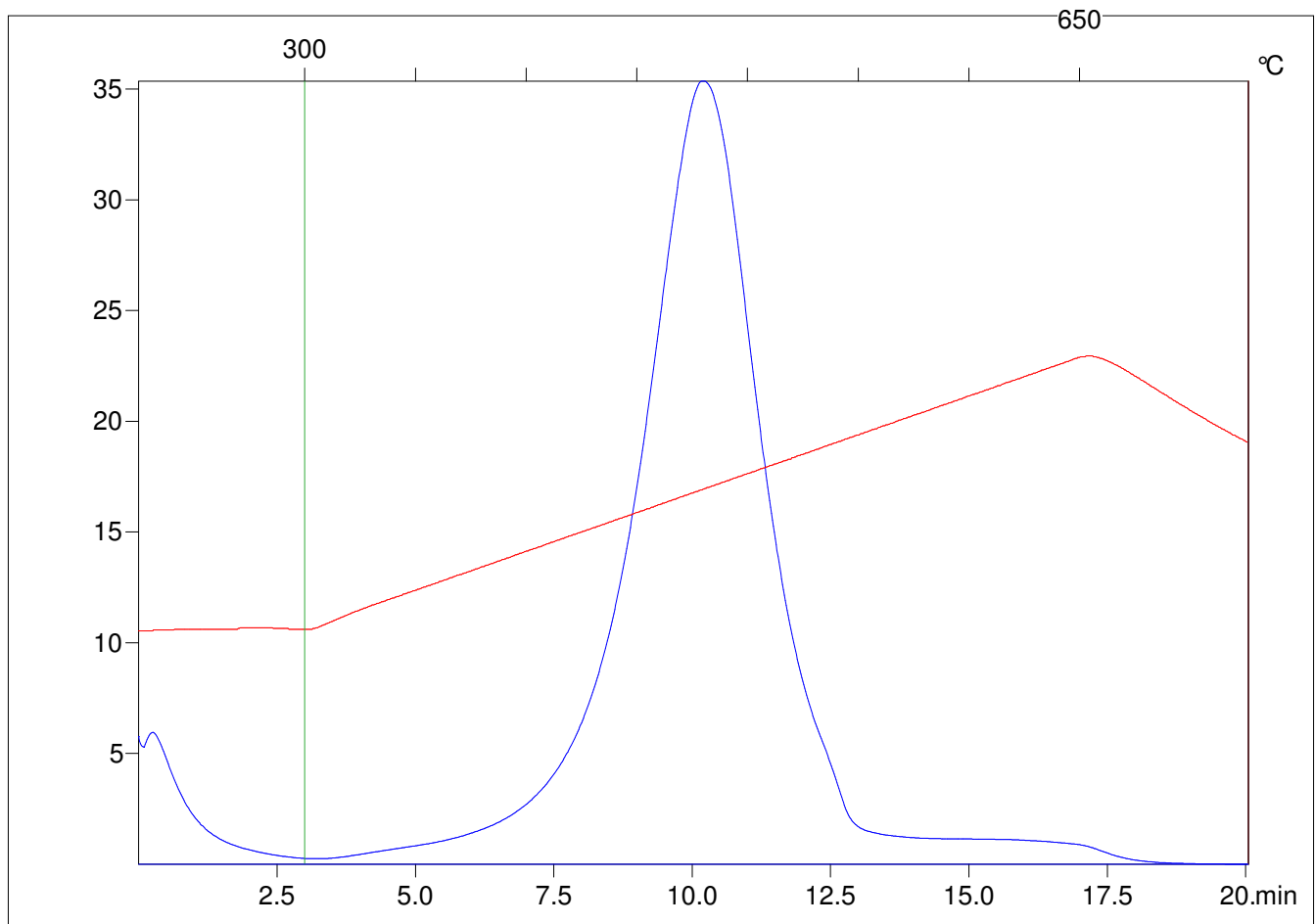
Method =Bulk Rock

Cycle=Basic

KFID(10\*9)=1444

Qty =71.0

TOC=5.06



C:\VINC\PK2\_1792\PK050.R00 : FID pyrolysis graphic

State

Pyro Status

Oxi Status